

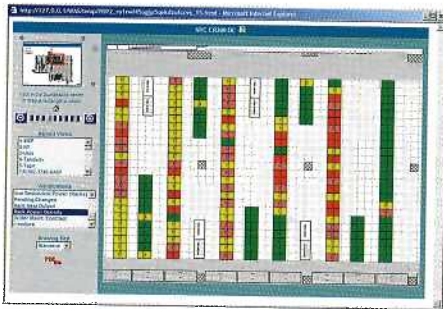
New Products

Breakthrough product transforms mission critical data center operations management

Aperture Technologies Inc. announced the launch of VISTA 500, a comprehensive data center infrastructure resource management system that changes the way companies manage today's increasingly complex data center environments.

VISTA 500 represents the culmination of Aperture's 20 years of experience and expertise in the data center industry. Collaborating with leading IT users, Aperture has created a landmark solution that gives IT executives and managers an unprecedented level of control over physical assets such as space, power and cooling as well as the configuration management complexities that threaten the viability of data centers.

A simple model of the data center is no



longer enough to effectively manage today's dynamic data center and support inevitable future growth. However, VISTA 500 has newly added functionality to model the enterprise data center and manage its complex physical infrastructure. With this major new release, VISTA 500 models today's data center environment with features and functionality not offered elsewhere, helping companies to optimize their data center operations.

According to a survey conducted of more than 100 companies, nearly 40 percent of respondents have run out of data center space, power or cooling capacity without having sufficient notice beforehand. This can have a significant negative impact on the overall business and the bottom line.

VISTA 500 includes:

- **Advanced Power Management and Device Support:** Tracks the impact of outages, rack power availability and validates redundancy. Provides comprehensive three-phase power connectivity data model.
- **Enhanced Support for Blade Servers:** Integrates blade server provisioning with change management processes and provides management and control of the provisioning of blade chassis.
- **Enhanced Connectivity:** Loads and maintains physical network and storage connections at multiple levels of granularity.
- **Improved Operational Management Reporting:** Included reporting and analysis capabilities, standardized on Crystal Reports, allow instant access to actionable information. Also included are advanced ad-hoc and process reporting.
- **Service-Level Escalations for Infrastructure Processes:** Provides automated alerts when user-defined operating-level agreements or service-level agreements are not being met, and detailed process analysis for understanding the causes.
- **Equipment Request Catalog:** Organizations can standardize equipment provisioning requests, simplifying management and improving efficiency.
- **Full Web-Enablement of Equipment Install, Move, Decommission Processes:** Intuitive Web-based tools for device positioning providing a seamless, immediate work process with no manual drawing updates.

Foam hand cleaner helps support clean environment

New GOJO Green Certified Foam Hand Cleaner is the first certified foam-style hand soap to meet both the Green Seal and EcoLogo joint standard for hand cleaners and hand soaps. The certifications mean that the product has been rigorously tested by these unbiased, third-party organizations and meets the organizations' standards for being environmentally responsible without sacrificing product performance.

GOJO Green Certified Foam Hand Cleaner is a biodegradable handwashing formula in a foam-style format. The formula provides rich, luxurious, moisturizing lather. The formula is available in refills to fit three popular GOJO dispensing systems: the GOJO TFX Touch-Free Dispensing System; the GOJO CX Counter Mount Dispensing System; and the GOJO FMX push-style Foam Soap Dispensing System.



The formula provides a simple way for companies to help support a clean environment with environmentally responsible packaging and soap formulas.

Illuminated segments improve elevator safety

The Panachrome 3D elevator safety detection system from Janus Elevator Products combines premium infrared protection with illuminated segments that visually inform passengers when it is safe to enter or leave the elevator.

